

# Bosch Rexroth – More Sustainability

## More sustainable for your System: Directional Control Valve WE6

### DIRECTIONAL-CONTROL VALVE WE6

Standard at 100 bar



Power consumption: 168,65 kWh/a\*

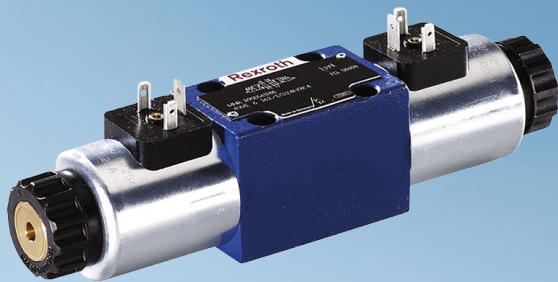


CO2: 72,01 kg/a\*



Energy costs: 33,02 €/a\*

\* at 5.000 operating hours/a and a power price of 0,19 €/kWh.



### DIRECTIONAL-CONTROL VALVE WE6

Energy optimized at 100 bar



Power consumption: 45,03 kWh/a\*



CO2: 19,23 kg/a\*



Energy costs: 8,56 €/a\*



Savings: 23,49 €/a\*

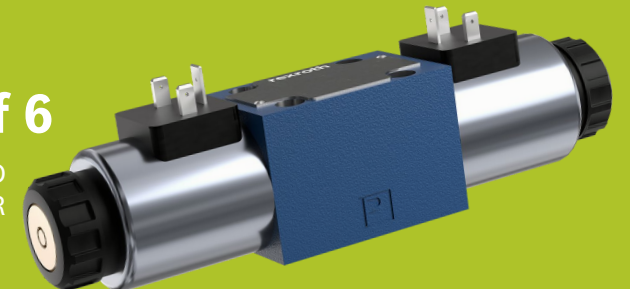
\* at 5.000 operating hours/a and a power price of 0,19 €/kWh.  
For detailed evaluation please compare with operating data.



## 1,5 instead of 6

TREES TO BE PLANTED  
TO COMPENSATE FOR  
CO2 CONSUMPTION\*\*

\*\*per year beech binds 12,5 kg CO<sub>2</sub>



# Bosch Rexroth – More Sustainability

## More sustainable for your System: Directional Control Valve WE6

### DIRECTIONAL-CONTROL VALVE WE6

Standard at 100 bar



**Power consumption: 168,65 kWh/a\***

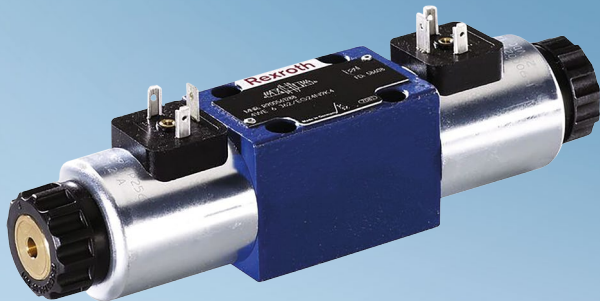


**CO2: 72,01 kg/a\***



**Energy costs: 32,02 €/a\***

\* at 5.000 operating hours/a and a power price of 0,19 €/kWh.



### DIRECTIONAL-CONTROL VALVE WE6

Energy optimized at 100 bar



**Power consumption: 45,03 kWh/a\***



**CO2: 19,23 kg/a\***

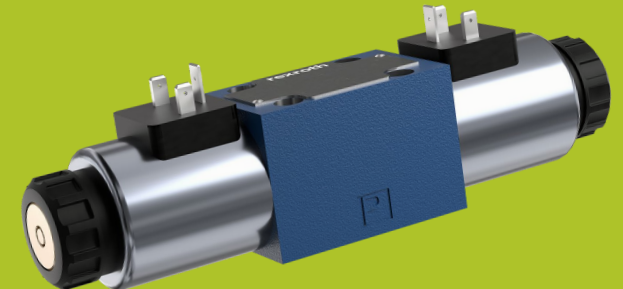


**Energy costs: 8,56 €/a\***



**Savings: 23,49 €/a\***

\* at 5.000 operating hours/a and a power price of 0,19 €/kWh.  
For detailed evaluation please compare with operating data.



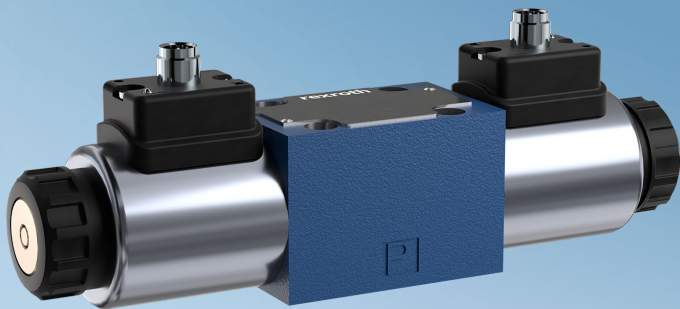
# Bosch Rexroth – More Sustainability

## More sustainable for your System: Directional Control Valve WE6

### DIRECTIONAL-CONTROL VALVE WE6

#### Energy optimized

Hydraulic valves play an important role in the performance and efficiency of a hydraulic systems. By using energy-efficient valves, you can optimize your system to achieve maximum performance with minimum energy consumption. With the WE6 directional control valve, you can save up to 73% energy.



\* at 5.000 operating hours/a and a power price of 0,19 €/kWh.  
For detailed evaluation please compare with operating data.

50 bar	100 bar	250 bar	315 bar
<b>Savings:</b> 21,53 €/a*	<b>Savings:</b> 23,49 €/a*	<b>Savings:</b> 38,62 €/a*	<b>Savings:</b> 49,99 €/a*
<b>Power consumption:</b> 41,12 kWh/a*	<b>Power consumption:</b> 45,03 kWh/a*	<b>Power consumption:</b> 82,77 kWh/a*	<b>Power consumption:</b> 116,28 kWh/a*
<b>CO<sub>2</sub>:</b> 17,56 kg/a*	<b>CO<sub>2</sub>:</b> 19,23 kg/a*	<b>CO<sub>2</sub>:</b> 35,34 kg/a*	<b>CO<sub>2</sub>:</b> 49,65 kg/a*
<b>Energy costs:</b> 7,81 €/a*	<b>Energy costs:</b> 8,56 €/a*	<b>Energy costs:</b> 15,73 €/a*	<b>Energy costs:</b> 22,09 €/a*
<b>Savings:</b> 73 %*	<b>Savings:</b> 73 %*	<b>Savings:</b> 71 %*	<b>Savings:</b> 69 %*

# Bosch Rexroth – More Sustainability

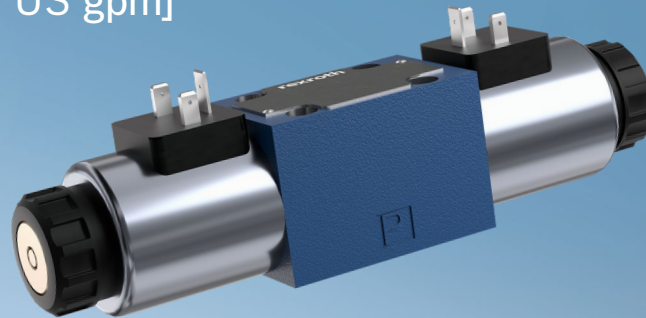
## More sustainable for your System: Directional Control Valve WE6

Directional spool valves, direct operated, with solenoid actuation – Type WE

The directional valves of type WE are solenoid-actuated directional spool valves that can be used as electro-magnetic component. They control start, stop and direction of a flow.

### Technical Features

- Max. operating pressure 3150 bar [5076 psi]
- Max. flow: 60 l/min [15.8 US gpm]



- **Reduction of solenoid power:**  
30 watts to 8 watts (SO47)

- **Reduction of piston clearance:**  
Standard T10 to T06

- **Data Sheet :**  
[23178](#)

- **Ordering Code:**

01	02	03	04	05	06	07	08	09	10	11	12	13	14	15	16	17	18	19	20	21
	WE	6		6X	/		E				/				●				●	